

REVISION HISTORY				
LEVEL	DESCRIPTION	DATE	DRN	APP

C-1 TRANSMISSION CONNECTOR			
QTY	DESCRIPTION	PCS PIN	NOTES
	CONNECTOR		
	TERMINALS		
ALL PARTS FROM DONER HARNESS			

C-2 RANGE SENSOR			
QTY	DESCRIPTION	PCS PIN	NOTES
	CONNECTOR		
	TERMINALS		
ALL PARTS FROM DONER HARNESS			

C-3 OUTPUT SHAFT SPEED SENSOR			
QTY	DESCRIPTION	PCS PIN	NOTES
	CONNECTOR		
	TERMINALS		
ALL PARTS FROM DONER HARNESS			

C-4 LAPTOP CAL CONNECTOR			
QTY	DESCRIPTION	PCS PIN	NOTES
1	CONNECTOR	CON-3416	
3	TERMINALS	CON-1038	
1	TPA	CON-3417	CREAM
3	CABLE SEALS	CON-1027	WHT

C-5 OPTION			
QTY	DESCRIPTION	PCS PIN	NOTES
1	CONNECTOR	CON-0065	
4	TERMINALS	CON-0051	

C-6 CAN BUS CONNECTOR			
QTY	DESCRIPTION	PCS PIN	NOTES
1	CONNECTOR	CON-5050	
2	TERMINALS	CON-5200	(20-18gauge)
1	WEDGE LOCK	CON-5100	ORN

C-7 THROTTLE POSITION SENSOR			
QTY	DESCRIPTION	PCS PIN	NOTES
1	CONNECTOR	CON-2302	
3	TERMINALS	CON-1006	
3	CABLE SEALS	CON-1004	VIO

APPLICABLE STANDARDS

- ASME Y14.100-200
- ASME Y14.5M-1994
- IPC/WHMA-A-620A-CLASS 2
- MARK IAW MIL-STD-130.

NOTES:

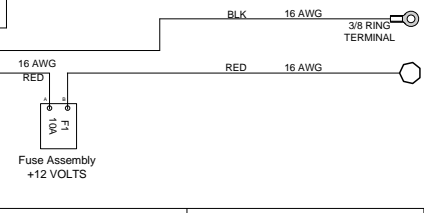
- 1.) WIRE LENGTH TOLERANCE +/- .12 INCH
- 2.) WIRE GAUGE IS 20 AWG UNLESS OTHERWISE STATED
- 3.) TIE ALL LOOM JOINTS UNLESS OTHERWISE STATED
- 4.) TWIST INDICATED WIRES AT LEAST 10-12 TURNS PER FOOT
- 5.) PLACE TAGS NO MORE THAN 2" FROM CONNECTOR. PLACE TAGS FOR UNTERMINATED WIRES NO MORE THAN 2" FROM UNTERMINATED END.
- 6.) WIRE TYPE IS TXL UNLESS OTHERWISE STATED

COMPANY:
POWERTRAIN CONTROL SOLUTIONS

TITLE:
FORD 5R55E TCM-2000 HARNESS

SIZE: C	CUSTOMER DRAWING NO. XXXXXX-XXXXX	PCS PART NUMBER TCM-4136	REV: 001
DRAWN BY: FRED D.		DATE:	APPROVED BY: XXXXX
SHEET		1 OF 3	

S#	FUNCTION	COLOR	F1 QTY	DESCRIPTION	PCS PIN	NOTES
S1	12 VOLTS SWITCHED	RED	1	CONNECTOR	CON-2200	
S2	GROUND	BLK	1	FUSE CAP:	CON-2201	BLK
S3	SENSOR GROUND	BLK/WHT	1	TPA	CON-2202	BLU
S4	CAN HIGH	WHT/RED	2	TERMINAL	CON-1020	(18-16 AWG)
S5	CAN LOW	WHT/BLK	1	FUSE	CON-2221	10A
			2	CABLE SEAL	CON-1001	GRN



WIRE COLOR ABBREVIATIONS	TXI	COLOR	NOTES
BLK	BLACK		
BRN	BROWN		
RED	RED		
ORN	ORANGE		
YEL	YELLOW		
LT.GRN	LIGHT GREEN		
GRN	GREEN		
LT.BLU	LIGHT BLUE		
BLU	BLUE		
VIO	VIOLET		
GRY	GRAY		
WHT	WHITE		
PNK	PINK		

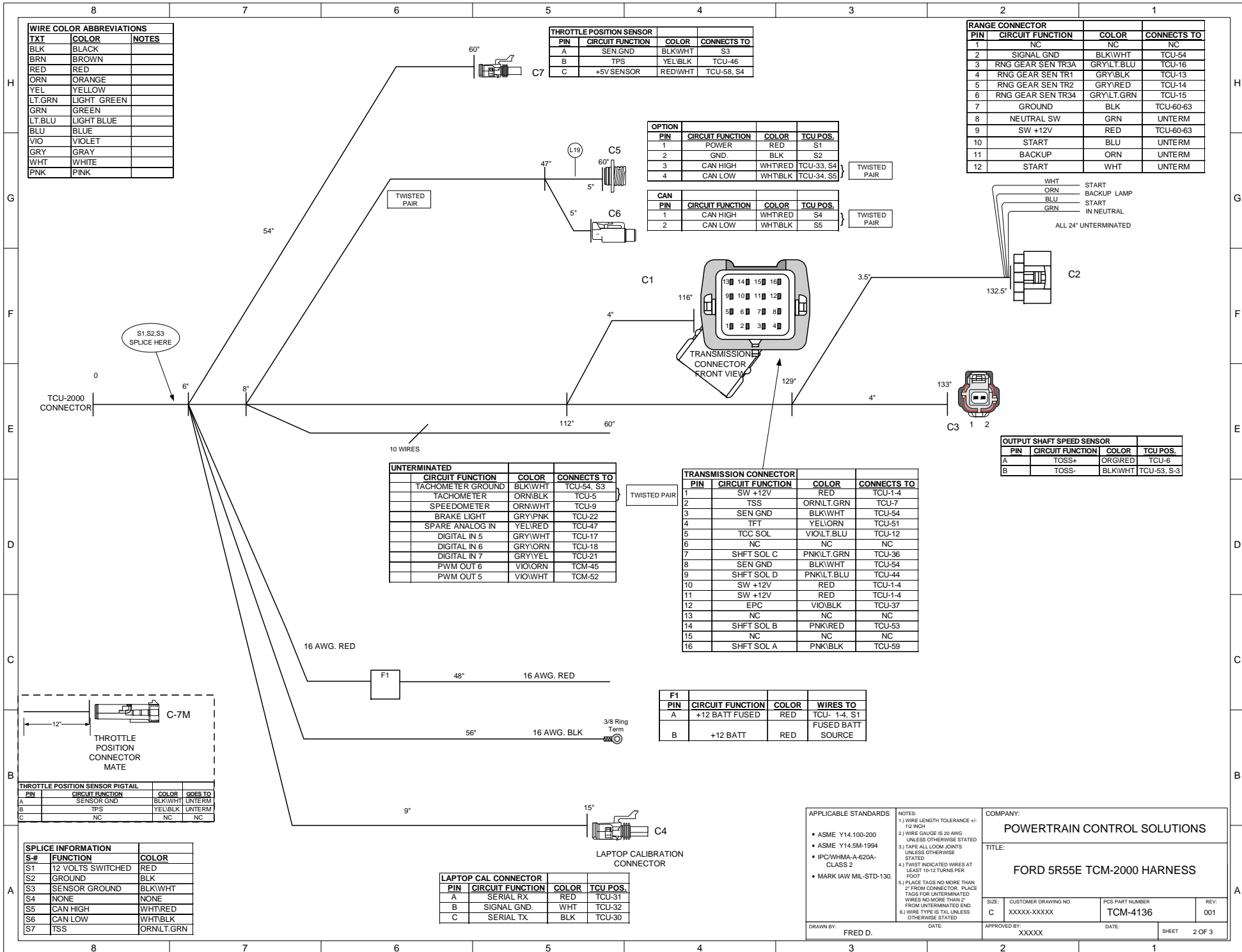
THROTTLE POSITION SENSOR			
PIN	CIRCUIT FUNCTION	COLOR	CONNECTS TO
A	SEN.GND	BLKWHT	S3
B	TPS	YELBLK	TCU-46
C	+5V SENSOR	RED/WHT	TCU-58, S4

RANGE CONNECTOR			
PIN	CIRCUIT FUNCTION	COLOR	CONNECTS TO
1	NC	NC	NC
2	SIGNAL GND	BLKWHT	TCU-54
3	RNG GEAR SEN TR3A	GRY/BLK	TCU-16
4	RNG GEAR SEN TR1	GRY/BLK	TCU-13
5	RNG GEAR SEN TR2	GRY/RED	TCU-14
6	RNG GEAR SEN TR34	GRY/LT.GRN	TCU-15
7	GROUND	BLK	TCU-60-63
8	NEUTRAL SW	GRN	UNTERM
9	SW +12V	RED	TCU-60-63
10	START	BLU	UNTERM
11	BACKUP	ORN	UNTERM
12	START	WHT	UNTERM

OPTION			
PIN	CIRCUIT FUNCTION	COLOR	TCU POS.
1	POWER	RED	S1
2	GND.	BLK	S2
3	CAN HIGH	WHT/RED	TCU-33, S4
4	CAN LOW	WHT/BLK	TCU-34, S5

CAN			
PIN	CIRCUIT FUNCTION	COLOR	TCU POS.
1	CAN HIGH	WHT/RED	S4
2	CAN LOW	WHT/BLK	S5

WHT START
ORN BACKUP LAMP
BLU START
GRN IN NEUTRAL
ALL 24" UNTERMINATED



UNTERMINATED			
CIRCUIT FUNCTION	COLOR	CONNECTS TO	
TACHOMETER GROUND	BLKWHT	TCU-54, S3	
TACHOMETER	ORN/BLK	TCU-5	
SPEEDOMETER	ORN/WHT	TCU-9	
BRAKE LIGHT	GRY/PNK	TCU-22	
SPARE ANALOG IN	YEL/RED	TCU-47	
DIGITAL IN 5	GRY/WHT	TCU-17	
DIGITAL IN 6	GRY/ORN	TCU-18	
DIGITAL IN 7	GRY/YEL	TCU-21	
PWM OUT 6	VIO/ORN	TCM-45	
PWM OUT 5	VIO/WHT	TCM-52	

TRANSMISSION CONNECTOR			
PIN	CIRCUIT FUNCTION	COLOR	CONNECTS TO
1	SW +12V	RED	TCU-1-4
2	TSS	ORN/LT.GRN	TCU-7
3	SEN GND	BLKWHT	TCU-54
4	TFT	YEL/ORN	TCU-51
5	TCC SOL	VIO/LT.BLU	TCU-12
6	NC	NC	NC
7	SHFT SOL C	PNK/LT.GRN	TCU-36
8	SEN GND	BLKWHT	TCU-54
9	SHFT SOL D	PNK/LT.BLU	TCU-44
10	SW +12V	RED	TCU-1-4
11	SW +12V	RED	TCU-1-4
12	EPC	VIO/BLK	TCU-37
13	NC	NC	NC
14	SHFT SOL B	PNK/RED	TCU-53
15	NC	NC	NC
16	SHFT SOL A	PNK/BLK	TCU-59

F1			
PIN	CIRCUIT FUNCTION	COLOR	WIRES TO
A	+12 BATT FUSED	RED	TCU- 1-4, S1
B	+12 BATT	RED	FUSED BATT SOURCE

THROTTLE POSITION SENSOR PIGTAIL			
PIN	CIRCUIT FUNCTION	COLOR	GOES TO
A	SENSOR GND	BLKWHT	UNTERM
B	TPS	YEL/BLK	UNTERM
C	NC	NC	NC

SPLICE INFORMATION		
S#	FUNCTION	COLOR
S1	12 VOLTS SWITCHED	RED
S2	GROUND	BLK
S3	SENSOR GROUND	BLKWHT
S4	NONE	NONE
S5	CAN HIGH	WHT/RED
S6	CAN LOW	WHT/BLK
S7	TSS	ORN/LT.GRN

LAPTOP CAL CONNECTOR			
PIN	CIRCUIT FUNCTION	COLOR	TCU POS.
A	SERIAL RX	RED	TCU-31
B	SIGNAL GND.	WHT	TCU-32
C	SERIAL TX	BLK	TCU-30

APPLICABLE STANDARDS • ASME Y14.100-200 • ASME Y14.5M-1994 • IPC/WHMA-A-620A-CLASS 2 • MARK IAW MIL-STD-130.	NOTES: 1.) WIRE LENGTH TOLERANCE +/- 1/2" INCH 2.) WIRE GAUGE IS 20 AWG UNLESS OTHERWISE STATED 3.) TAPE ALL LOOK-KNOTS UNLESS OTHERWISE STATED 4.) TWIST INDICATED WIRES AT LEAST 10-12 TURNS PER FOOT 5.) PLACE TAGS NO MORE THAN 2" FROM CONNECTOR. PLACE TAGS FOR UNTERMINATED WIRES NO MORE THAN 2" FROM UNTERMINATED END. 6.) WIRE TYPE IS TXL UNLESS OTHERWISE STATED.	COMPANY: POWERTRAIN CONTROL SOLUTIONS TITLE: FORD 5R55E TCM-2000 HARNESS
DRAWN BY: FRED D. DATE:	CUSTOMER DRAWING NO. XXXXX-XXXXX PCS PART NUMBER TCM-4136 REV: 001	APPROVED BY: XXXXX DATE:
SHEET 2 OF 3		